



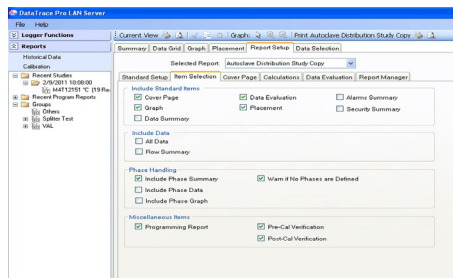
# DataTrace Pro Software

## Process Monitoring Solution Software

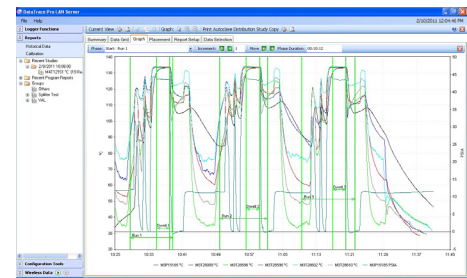
Mesa's DataTrace Pro (DT Pro) Software is the heart of the DataTrace MPRF and MPIII process monitoring solution. From the creation of process reports, analyzing and understanding data and complying with your regulatory requirements, DataTrace Pro gives you greater insight and productivity.

## Minimal Training for Maximum Productivity

DT Pro Software is packed with time-saving features like shortcuts to minimize key strokes, intuitive screens and batch functions. Its unmatched reporting capabilities let you pre-define exactly what reports you need, create individual templates, then quickly use the templates to generate your customized reports. Field calibrations, logger battery changes and data logging events are automatically incorporated into the audit trail. These enhanced reporting capabilities also include the ability to create study and phase reports in a pdf format.

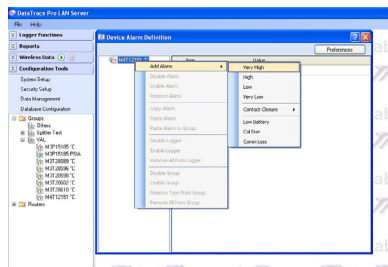


Enhanced Reporting Options

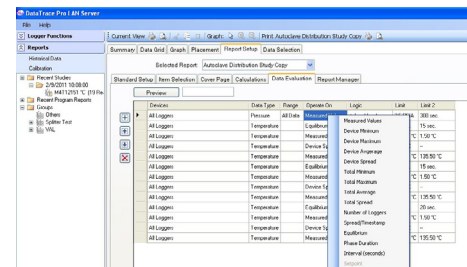


Increased Graphical Control

Most features and controls within DT Pro are intuitive and self-explanatory or conform with standard conventions. For many items, a mouse right-click will expose a pop-up menu with more options.



User Defined Pass/Fail Criteria



Alarm Definition Options

## Unique Features, Exceptional Security

DT Pro integrates smart security and regulatory capabilities including an audit trail log for all security levels, data encryption, electronic signatures, enhanced password protection and administrative security options. Installation Validation is now easier than ever with new System Configuration Reports. IQ/OQ/PQ Documents and a Validation Manual are also available. These features allow you to achieve FDA 21 CFR Part 11 or GxP compliance.

DT Pro is designed to help you control your process, your budget and your time. It has many new features that will make your job easier for validation and process reporting. For starters, the user interface is more graphical and intuitive than other software, allowing for greater understanding, ease-of-use and efficiency. It also includes simplified report generation, data analysis and user defined pass/fail conditions. Numerous alarms and email notifications can be set by the user.

## Ordering Information

Product	Part Number	Description
<b>DT Pro Basic</b>	124768-510	Programming, Reporting, Templates, Calibration
<b>DT Pro Plus</b>	124768-511	Basic Version with RF capabilities and CFR Compliance
<b>DT Pro LAN Server</b>	124768-512	Plus Version with LAN capabilities
NOTE: Software may be ordered as a CD, p/n 124768-519		

## Upgrade Information

Product	Part Number	Description
<b>To DT Pro Basic from DTW or DTRF</b>	124768-513	Upgrade to DT Pro Basic from DTW/DTRF
<b>To DT Pro Plus from DTW or DTRF from DT Pro Basic</b>	124768-514 124768-515	Upgrade to DT Pro Plus from DTW/DTRF Upgrade to DT Pro Plus from DT Pro Basic
<b>To DT Pro LAN Server from DTW or DTRF from DT Pro Basic from DT Pro Plus</b>	124768-516 124768-517 124768-518	Upgrade to LAN Server from DTW/DTRF Upgrade to LAN Server from DT Pro Basic Upgrade to LAN Server from DT Pro Plus

## What's New in DT Pro

- A new reporting engine which allows the creation of custom report templates including new display options, types of calculations, pass/fail evaluations, cover page and signature line options, multiple methods for creating studies, selecting specific data ranges or loggers and new tools for the efficient creation of phases or sub-summaries.
- Support for a self-configuring, time-synchronized RF mesh network and AC powered router/repeaters.
- The ability to organize loggers by creating groups, studies or assigning ID tags to individual loggers.
- New pre- and post-calibration utility interfaces with various temperature references, baths or dry-wells and allows for automated calibration checking or adjustment using multiple user defined setpoints and parameters.
- Alarm configuration and control including high or low types, fault detection, calibration-due warnings, alarm reporting, email notification, alarm acknowledgement and escalation.
- The ability to assign loggers a separate ID tag for each measured parameter.
- New MS SQL Server® Express database allows direct access (read only) to data for applications which support standard SQL data interfaces – no additional MS SQL/Server licenses or fees are required.
- Automatically identify the type of logger being programmed or read without the need for the user to select a logger type.



**Pentium 4CPU – 2.0 GHz - Windows XP , Windows Vista - Windows 7 - 512 MB RAM - 500 MB of free hard disk space - 1 free USB port**